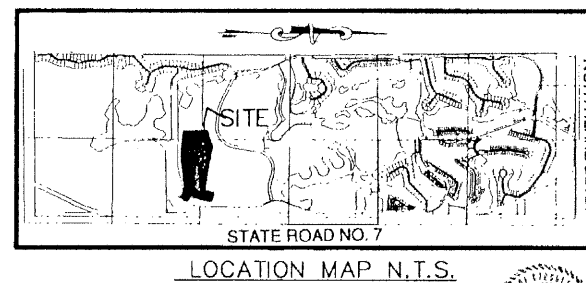


# IBIS GOLF AND COUNTRY CLUB PLAT NO. 28

PREPARED BY  
DAVID P. LINDLEY  
OF  
**CAULFIELD and WHEELER, INC.**  
ENGINEERS - PLANNERS - SURVEYORS  
7301-A WEST PALMETTO PARK ROAD, SUITE 100A  
BOCA RATON, FLORIDA 33433 - (561)392-1991  
JANUARY - 2001

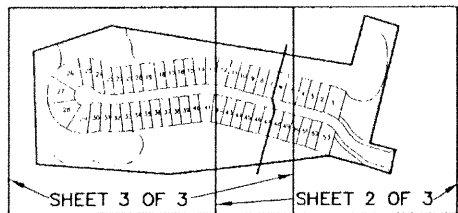
A PLANNED UNIT DEVELOPMENT  
BEING A REPLAT OF A PORTION OF TRACTS D AND E, IBIS GOLF AND COUNTRY CLUB  
PLAT NO. 7, AS RECORDED IN PLAT BOOK 67, PAGES 152 THROUGH 168,  
LYING IN SECTIONS 25 AND 36, TOWNSHIP 42 SOUTH, RANGE 41 EAST,  
CITY OF WEST PALM BEACH, PALM BEACH COUNTY, FLORIDA



## 194

STATE OF FLORIDA  
COUNTY OF PALM BEACH  
THIS PLAT WAS FILED FOR  
RECORD AT 8:21 AM  
THIS 12 DAY OF JUNE  
A.D. 2001 AND DULY RECORDED  
IN PLAT BOOK NO. 194  
ON PAGES 194 THROUGH 196  
DOROTHY H. WILKEN  
CLERK CIRCUIT COURT

SHEET 1 OF 3



KEY MAP N.T.S.

### DESCRIPTION

A PORTION OF TRACTS D AND E, IBIS GOLF AND COUNTRY CLUB PLAT NO. 7,  
AS RECORDED IN PLAT BOOK 67, PAGES 152 THROUGH 168, LYING IN SECTIONS  
25 AND 36, TOWNSHIP 42 SOUTH, RANGE 41 EAST, CITY OF WEST PALM BEACH,  
PALM BEACH COUNTY, FLORIDA BEING MORE PARTICULARLY DESCRIBED AS  
FOLLOWS:

BEGINNING AT THE SOUTHWEST CORNER OF SAID TRACT D; THENCE  
N.72°06'40"E., A DISTANCE OF 415.30 FEET; THENCE S.80°35'50"E., A DISTANCE  
OF 1,235.34 FEET; THENCE N.15°42'22"E., A DISTANCE OF 257.57 FEET; THENCE  
S.73°08'47"E., A DISTANCE OF 181.54 FEET; THENCE S.13°36'52"W., A DISTANCE  
OF 612.69 FEET; THENCE S.74°32'41"E., A DISTANCE OF 133.32 FEET TO THE  
POINT OF INTERSECTION WITH THE WEST LINE OF SANDHILL WAY EAST; THENCE  
SOUTHWESTERLY ALONG SAID WEST LINE INCLUDING A CURVE TO THE LEFT WHOSE  
RADIUS POINT BEARS S71°37'26"E., HAVING A RADIUS OF 550.00 FEET, A  
CENTRAL ANGLE OF 1°50'33", AN ARC DISTANCE OF 17.69 FEET TO A POINT OF  
COMPOUND CURVATURE; THENCE SOUTHERLY ALONG THE ARC OF A CURVE TO  
THE LEFT HAVING A RADIUS OF 385.00 FEET, A CENTRAL ANGLE OF 7°00'33";  
AN ARC DISTANCE OF 47.10 FEET TO A POINT OF TANGENCY; THENCE  
S05°31'28"W., A DISTANCE OF 53.24 FEET TO A POINT OF CURVATURE; THENCE  
SOUTHERLY ALONG THE ARC OF A CURVE TO THE RIGHT HAVING A RADIUS OF  
265.93 FEET, A CENTRAL ANGLE OF 0°53'49", AN ARC DISTANCE OF 4.16 FEET  
(THE PREVIOUS 4 CURVES BEING ALONG SAID WEST LINE OF SANDHILL WAY  
EAST; THENCE N.71°57'46"W., A DISTANCE OF 137.08 FEET; THENCE  
N.75°49'09"W., A DISTANCE OF 190.35 FEET; THENCE S.83°38'33"W., A DISTANCE  
OF 816.94 FEET; THENCE N.85°27'49"W., A DISTANCE OF 674.14 FEET; THENCE  
N.01°31'53"W., A DISTANCE OF 577.77 FEET TO THE POINT OF BEGINNING,  
CONTAINING 1,133,627 SQUARE FEET OR 26.025 ACRES, MORE OR LESS.

### DEDICATIONS AND RESERVATIONS

CITY OF WEST PALM BEACH  
COUNTY OF PALM BEACH  
STATE OF FLORIDA  
KNOW ALL MEN BY THESE PRESENTS THAT IBIS WEST PALM PARTNERS L.P., A  
DELAWARE LIMITED PARTNERSHIP, BY BRE/IBIS INC., A DELAWARE  
CORPORATION, ITS MANAGING GENERAL PARTNER, OWNER OF THE LAND SHOWN  
HEREON AS:

IBIS GOLF AND COUNTRY CLUB PLAT NO. 28

HAS CAUSED THE SAME TO BE SURVEYED AND PLATTED, AS SHOWN HEREON,  
AND DOES HEREBY MAKE THE FOLLOWING DEDICATIONS AND RESERVATIONS:

#### 1. UTILITY EASEMENTS:

NON-EXCLUSIVE UTILITY EASEMENTS AS SHOWN HEREON ARE HEREBY  
DEDICATED IN PERPETUITY TO THE APPROPRIATE PUBLIC UTILITY  
COMPANIES FOR THE PURPOSES OF PROVIDING FOR THE  
CONSTRUCTION, INSTALLATION, MAINTENANCE AND OPERATION OF  
UNDERGROUND UTILITIES TO THE PROPERTY; SAID UTILITY EASEMENTS  
MAY BE USED FOR CABLE TELEVISION SERVICES; PROVIDED, HOWEVER,  
NO SUCH CONSTRUCTION, INSTALLATION, MAINTENANCE OR  
OPERATION OF CABLE TELEVISION SERVICES SHALL INTERFERE WITH  
FACILITIES AND SERVICES OF AN ELECTRIC, TELEPHONE, GAS OR OTHER  
PUBLIC UTILITY. NO PERMANENT STRUCTURES SHALL BE LOCATED  
WITHIN SAID EASEMENTS.

#### 2. DRAINAGE EASEMENTS:

THE DRAINAGE EASEMENTS, AS SHOWN HEREON, ARE HEREBY  
DEDICATED TO THE TERRA LAGO HOMEOWNERS  
ASSOCIATION, INC. FOR THE CONSTRUCTION AND MAINTENANCE OF  
DRAINAGE FACILITIES AND SHALL BE THE PERPETUAL MAINTENANCE  
OBLIGATION OF SAID ASSOCIATION WITHOUT RECOURSE TO THE  
NORTHERN PALM BEACH COUNTY IMPROVEMENT DISTRICT AND THE  
CITY OF WEST PALM BEACH, FLORIDA.

#### 3. WATER MANAGEMENT TRACTS:

WATER MANAGEMENT TRACTS W AND W1 AS SHOWN  
HEREON ARE HEREBY DEDICATED, IN FEE SIMPLE, TO THE NORTHERN  
PALM BEACH COUNTY IMPROVEMENT DISTRICT FOR WATER  
MANAGEMENT PURPOSES. SAID WATER MANAGEMENT TRACTS BEING  
THE PERPETUAL MAINTENANCE OBLIGATION OF SAID DISTRICT, ITS  
SUCCESSORS AND/OR ASSIGNS, WITHOUT RECOURSE TO THE CITY OF  
WEST PALM BEACH.

#### 4. TRACTS GC, GC1, GC2 AND GC3

THE COMMON AREA SHOWN HEREON AS TRACTS GC, GC1, GC2 AND GC3  
ARE HEREBY DEDICATED TO THE IBIS PROPERTY OWNERS ASSOCIATION, INC.,  
FOR GOLF COURSE, OPEN SPACE, CART PATHS, SIGNAGE  
AND LANDSCAPING, AND FOR THE CONSTRUCTION AND MAINTENANCE OF  
UNDERGROUND UTILITIES INCLUDING C.A.T.V. AND DRAINAGE  
FACILITIES, AND ARE THE PERPETUAL MAINTENANCE OBLIGATION OF SAID  
ASSOCIATION, WITHOUT RECOURSE TO THE CITY OF WEST PALM  
BEACH AND WITHOUT RECOURSE TO THE NORTHERN PALM BEACH  
COUNTY IMPROVEMENT DISTRICT.

#### 5. ACCESS EASEMENT:

A NON-EXCLUSIVE ACCESS EASEMENT AS SHOWN HEREON IS HEREBY  
DEDICATED IN PERPETUITY TO THE CITY OF WEST PALM BEACH  
FOR MAINTENANCE AND OPERATION OF UNDERGROUND UTILITIES ON AND  
OVER TERRA LAGO DRIVE.

#### 6. ROAD:

TERRA LAGO DRIVE, AS SHOWN HEREON, IS PRIVATE AND  
NOT FOR PUBLIC USE AND IS HEREBY DEDICATED TO THE TERRA LAGO  
HOMEOWNERS ASSOCIATION, INC. FOR INGRESS AND EGRESS AND FOR THE  
CONSTRUCTION AND MAINTENANCE OF UNDERGROUND UTILITIES AND  
DRAINAGE FACILITIES, AND IS THE PERPETUAL MAINTENANCE  
OBLIGATION OF THE TERRA LAGO HOMEOWNERS  
ASSOCIATION, INC., WITHOUT RECOURSE TO THE CITY OF WEST PALM  
BEACH AND WITHOUT RECOURSE TO THE NORTHERN PALM BEACH  
COUNTY IMPROVEMENT DISTRICT. THE UNDERSIGNED DEVELOPER  
HEREBY RESERVES UNTO ITSELF, ITS AFFILIATES, DESIGNEES,  
SUCCESSORS AND ASSIGNS, A NON-EXCLUSIVE, PERPETUAL EASEMENT,  
FOR INGRESS AND EGRESS OVER, UNDER, ACROSS AND THROUGH  
TERRA LAGO DRIVE, AS SHOWN HEREON,  
AND FOR THE PURPOSES OF CONSTRUCTION AND INSTALLATION OF UTILITIES  
AND DRAINAGE FACILITIES.

AN INGRESS-EGRESS EASEMENT OVER AND ACROSS  
TERRA LAGO DRIVE, AS SHOWN HEREON, IS  
HEREBY DEDICATED TO THE NORTHERN PALM BEACH COUNTY IMPROVEMENT  
DISTRICT FOR ACCESS TO AND FROM SAID DISTRICT'S WATER  
MANAGEMENT FACILITIES, LANDS, AND EASEMENTS FOR WATER  
MANAGEMENT PURPOSES. SAID INGRESS-EGRESS EASEMENT BEING  
SUBJECT TO THAT CERTAIN AGREEMENT AS TO REVERTER AND/OR  
RELEASE OF SPECIFICALLY DESIGNATED PROPERTY RIGHTS DATED MAY  
24, 1990, AND RECORDED IN OFFICIAL RECORDS BOOK 6473, AT PAGES  
1961 THROUGH 1969, INCLUSIVE, PUBLIC RECORDS OF PALM BEACH COUNTY, FLORIDA,  
AS MAY BE AMENDED. THE LANDS LYING IN AND UNDER SAID INGRESS-EGRESS EASEMENT  
ARE THE PERPETUAL MAINTENANCE OBLIGATION OF THE TERRA LAGO HOMEOWNERS  
ASSOCIATION, INC., ITS SUCCESSORS AND ASSIGNS, WITHOUT RECOURSE TO SAID  
DISTRICT.

#### 7. TRACTS L AND L1

THE COMMON AREA AS SHOWN HEREON AS TRACTS L AND L1  
ARE HEREBY DEDICATED TO THE TERRA LAGO  
HOMEOWNERS ASSOCIATION, INC. FOR OPEN SPACE, PEDESTRIAN PATHWAY, SIGNAGE  
AND LANDSCAPING, AND FOR THE CONSTRUCTION AND MAINTENANCE OF  
UNDERGROUND UTILITIES INCLUDING C.A.T.V. AND DRAINAGE  
FACILITIES, AND ARE THE PERPETUAL MAINTENANCE OBLIGATION OF SAID  
ASSOCIATION, WITHOUT RECOURSE TO THE CITY OF WEST PALM  
BEACH AND WITHOUT RECOURSE TO THE NORTHERN PALM BEACH  
COUNTY IMPROVEMENT DISTRICT.

#### 8. WATER MANAGEMENT EASEMENT

THE WATER MANAGEMENT EASEMENT, AS SHOWN HEREON, IS HEREBY  
DEDICATED TO THE NORTHERN PALM BEACH COUNTY IMPROVEMENT DISTRICT  
(NORTHERN) FOR USE FOR ACCESS AND MAINTENANCE OF ADJACENT WATER  
MANAGEMENT FACILITIES. SAID EASEMENTS BEING THE PERPETUAL MAINTENANCE  
OBLIGATION OF IBIS PROPERTY OWNERS ASSOCIATION, INC., A FLORIDA CORPORATION,  
NOT FOR PROFIT, ITS SUCCESSORS AND ASSIGNS, WITHOUT RECOURSE TO SAID  
NORTHERN PALM BEACH COUNTY IMPROVEMENT DISTRICT AND WITHOUT RECOURSE TO  
THE CITY OF WEST PALM BEACH.

#### 9. WATER MANAGEMENT ACCESS EASEMENT

THE WATER MANAGEMENT ACCESS EASEMENT, AS SHOWN HEREON, IS HEREBY  
DEDICATED TO THE NORTHERN PALM BEACH COUNTY IMPROVEMENT DISTRICT  
(NORTHERN) FOR ACCESS TO AND FROM SAID DISTRICT'S WATER MANAGEMENT  
FACILITIES, LANDS AND EASEMENTS, THE LANDS LYING UNDER SAID WATER  
MANAGEMENT ACCESS EASEMENTS BEING THE PERPETUAL MAINTENANCE RESPONSIBILITY  
OF TERRA LAGO HOMEOWNERS ASSOCIATION, INC., A FLORIDA CORPORATION, NOT FOR  
PROFIT, ITS SUCCESSORS AND ASSIGNS, WITHOUT RECOURSE TO SAID NORTHERN PALM  
BEACH COUNTY IMPROVEMENT DISTRICT AND WITHOUT RECOURSE TO THE CITY OF WEST  
PALM BEACH.

IN WITNESS WHEREOF, IBIS WEST PALM PARTNERS L.P., A DELAWARE  
LIMITED PARTNERSHIP, BY BRE/IBIS INC., A DELAWARE CORPORATION, ITS  
MANAGING GENERAL PARTNER, HAS CAUSED THESE PRESENTS TO BE SIGNED  
BY ITS VICE PRESIDENT AND ATTESTED TO BY ITS SECRETARY AND ITS  
CORPORATE SEAL TO BE AFFIXED HERETO WITH AUTHORITY OF ITS BOARD  
OF DIRECTORS THIS 11th DAY OF JUNE 2001.

IBIS WEST PALM PARTNERS L.P., A DELAWARE LIMITED PARTNERSHIP,  
BY BRE/IBIS INC., A DELAWARE CORPORATION,  
ITS MANAGING GENERAL PARTNER

BY: Steven E. Orbach  
VICE PRESIDENT

ATTEST: Kenneth C. Whitney  
SECRETARY

#### ACKNOWLEDGMENT

STATE OF NEW YORK  
COUNTY OF NEW YORK  
BEFORE ME PERSONALLY APPEARED STEVEN E. ORBACH AND KENNETH C.  
WHITNEY, TO ME PERSONALLY KNOWN AND KNOWN TO ME TO BE  
THE INDIVIDUALS DESCRIBED IN AND WHO EXECUTED THE FOREGOING  
INSTRUMENT AS VICE PRESIDENT AND SECRETARY, RESPECTIVELY OF  
IBIS WEST PALM PARTNERS L.P., A DELAWARE LIMITED  
PARTNERSHIP, BY BRE/IBIS INC., A DELAWARE CORPORATION, ITS  
MANAGING GENERAL PARTNER. THEY  
ACKNOWLEDGED TO AND BEFORE ME THAT THEY EXECUTED SAID INSTRUMENT  
AS SUCH OFFICERS OF SAID CORPORATION AND SAID LIMITED PARTNERSHIP,  
THAT THE SEAL AFFIXED TO THE FOREGOING INSTRUMENT IS THE CORPORATE SEAL  
OF SAID CORPORATION, AND THAT IT WAS AFFIXED TO SAID INSTRUMENT BY  
DUE AND REGULAR CORPORATE AUTHORITY, AND THAT SAID INSTRUMENT IS  
THE FREE ACT AND DEED OF SAID CORPORATION AND SAID LIMITED PARTNERSHIP.

WITNESS MY HAND AND OFFICIAL SEAL THIS 17th DAY OF May 2001.

Sylvia M. Norford  
NOTARY PUBLIC

SYLVIA M. NORFORD  
Notary Public, State of New York  
No. 02048483  
Qualified in New York County  
Commission Expires February 2, 2003

#### TABULAR DATA

TOTAL AREA OF THIS PLAT	26.025 ACRES
AREA OF LOTS	9.676 ACRES
AREA OF TRACT L, L1	0.321 ACRES
AREA OF TRACT GC, GC1, GC2, GC3	8.930 ACRES
AREA OF TRACT W AND W1	6.934 ACRES
AREA OF PRIVATE ROADWAY	2.164 ACRES
TOTAL NUMBER OF UNITS THIS PLAT	53
DENSITY THIS PLAT (INCLUDING LAKES AND GOLF COURSE)	2.03 UNITS/ACRE
DENSITY THIS PLAT (NOT INCLUDING LAKES AND GOLF COURSE)	4.33 UNITS/ACRE

#### NORTHERN PALM BEACH COUNTY IMPROVEMENT DISTRICT ACCEPTANCE

THE NORTHERN PALM BEACH COUNTY IMPROVEMENT DISTRICT HEREBY ACCEPTS  
THE FEE SIMPLE DEDICATION OF, AND PERPETUAL MAINTENANCE RESPONSIBILITY  
OF WATER MANAGEMENT TRACTS W AND W1 AND HEREBY ACCEPTS THE  
INGRESS-EGRESS EASEMENT OVER TERRA LAGO DRIVE, WATER MANAGEMENT AND  
WATER MANAGEMENT ACCESS EASEMENTS AS SHOWN HEREON, ACKNOWLEDGING  
SAID EASEMENTS ARE SUBJECT TO THAT CERTAIN AGREEMENT AS TO REVERTER  
AND/OR RELEASE OF SPECIFICALLY DESIGNATED PROPERTY RIGHTS DATED MAY  
24, 1990, AND RECORDED IN OFFICIAL RECORDS BOOK 6473, AT PAGES 1961  
THROUGH 1969, INCLUSIVE, PUBLIC RECORDS OF PALM BEACH COUNTY, FLORIDA,  
AS MAY BE AMENDED; AND HEREBY ACKNOWLEDGES SAID DISTRICT HAS NO  
MAINTENANCE OBLIGATION ON OR UNDER THE LANDS OVER WHICH SAID  
EASEMENTS LIE, AND HEREBY ACKNOWLEDGES THAT THERE ARE NO DEDICATIONS  
TO, NOR MAINTENANCE RESPONSIBILITIES BEING INCURRED BY SAID DISTRICT ON  
THIS PLAT.

NORTHERN PALM BEACH COUNTY  
IMPROVEMENT DISTRICT  
DATE: 5/31/01 BY: Tessa N. Stewart  
TESULA N. STEWART,  
BOARD OF SUPERVISORS

#### CITY SURVEYOR

THIS PLAT HAS BEEN REVIEWED AND FOUND TO BE IN CONFORMANCE  
WITH CHAPTER 98-20, SECTION 177, FLORIDA STATUTES.

NORTHERN PALM BEACH COUNTY  
IMPROVEMENT DISTRICT  
DATE: 5/31/01 BY: Vincent J. Keel  
VINCENT J. KEEL PSM  
REGISTRATION NO. 4169  
STATE OF FLORIDA

#### APPROVALS

CITY OF WEST PALM BEACH  
COUNTY OF PALM BEACH  
STATE OF FLORIDA

THE PLAT, AS SHOWN HEREON, HAS BEEN APPROVED BY THE CITY  
COMMISSION OF THE CITY OF WEST PALM BEACH, FLORIDA, AND THE CITY  
DOES HEREBY FORMALLY ACCEPT THE OFFERS TO DEDICATE, CONTAINED ON  
THIS PLAT THIS 11th DAY OF JUNE 2001.

BY: Joel T. Jones  
JOEL T. JONES, MAYOR

APPROVED BY CITY PLANNING & ZONING BOARD ON THIS 24th DAY OF JUNE 2001.

BY: David M. Schultz  
DAVID M. SCHULTZ, CHAIRMAN

#### MORTGAGEE'S CONSENT

STATE OF FLORIDA  
COUNTY OF PALM BEACH

THE UNDERSIGNED HEREBY CERTIFIES THAT IT IS THE HOLDER OF A  
MORTGAGE, UPON THE PROPERTY DESCRIBED HEREON AND DOES HEREBY  
JOIN IN AND CONSENT TO THE DEDICATION OF THE LAND DESCRIBED IN SAID  
DEDICATION BY THE OWNERS THEREOF AND AGREES THAT ITS MORTGAGE,  
WHICH IS RECORDED IN OFFICIAL RECORDS BOOK 11133, AT PAGE 2000,  
AND OFFICIAL RECORDS BOOK 11134, PAGES 1, 19 AND 39  
OF THE PUBLIC RECORDS OF PALM BEACH COUNTY, FLORIDA,  
AND RELATED FINANCING AND SECURITY AGREEMENTS  
SHALL COLLECTIVELY BE SUBORDINATED TO THE DEDICATION SHOWN HEREON.

SUNTRUST BANK FORMERLY KNOWN AS  
SUNTRUST BANK, SOUTH FLORIDA, N.A.

BY: Joseph C. Erwin  
FIRST VICE PRESIDENT

ATTEST: Fred Romas  
NAME FRED ROMAS, VP

#### ACKNOWLEDGMENT

STATE OF FLORIDA  
COUNTY OF PALM BEACH

BEFORE ME PERSONALLY APPEARED JOSEPH C. ERWIN AND FRED ROMAS,  
WHO ARE PERSONALLY KNOWN TO ME OR HAVE PRODUCED  
AS IDENTIFICATION, AND WHO EXECUTED THE FOREGOING INSTRUMENT  
AS OFFICERS OF SUNTRUST BANK FORMERLY KNOWN AS  
SUNTRUST BANK, SOUTH FLORIDA, N.A., AND WHO  
ACKNOWLEDGED TO AND BEFORE ME THAT THEY EXECUTED SUCH  
INSTRUMENT AS SUCH OFFICERS OF SAID CORPORATION, AND THAT THE  
SEAL AFFIXED TO THE FOREGOING INSTRUMENT IS THE CORPORATE SEAL OF  
SAID CORPORATION AND THAT IT WAS AFFIXED TO SAID INSTRUMENT BY  
DUE AND REGULAR CORPORATE AUTHORITY, AND THAT SAID INSTRUMENT IS  
THE FREE ACT AND DEED OF SAID CORPORATION.

WITNESS MY HAND AND OFFICIAL SEAL THIS 25th DAY OF May 2001.

MY COMMISSION EXPIRES: 12-13-2004  
00987894

Atelvia M. Morgan  
NOTARY PUBLIC

#### ACCEPTANCE OF RESERVATIONS:

STATE OF FLORIDA  
COUNTY OF PALM BEACH

THE IBIS PROPERTY OWNERS ASSOCIATION, INC. HEREBY  
ACCEPTS THE DEDICATIONS OR RESERVATIONS TO SAID ASSOCIATION AS  
STATED AND SHOWN HEREON, AND HEREBY ACCEPTS ITS MAINTENANCE  
OBLIGATIONS FOR SAME AS STATED HEREON, DATED THIS 11th DAY OF  
June 2001.

WITNESS: Linda H. Wilcox  
IBIS PROPERTY OWNERS  
ASSOCIATION, INC. A FLORIDA  
CORPORATION NOT FOR PROFIT

#### ACKNOWLEDGMENT:

STATE OF FLORIDA  
COUNTY OF PALM BEACH

BEFORE ME PERSONALLY APPEARED Clifford G. Wilson, WHO IS  
PERSONALLY KNOWN TO ME, OR HAS PRODUCED  
IDENTIFICATION, AND WHO EXECUTED THE FOREGOING INSTRUMENT AS  
PRESIDENT OF IBIS PROPERTY OWNERS ASSOCIATION, INC., A FLORIDA  
CORPORATION NOT FOR PROFIT, AND ACKNOWLEDGED TO AND BEFORE ME  
THAT HE EXECUTED SUCH INSTRUMENT AS SUCH OFFICER OF SAID CORPORATION, AND  
THAT THE SEAL AFFIXED TO THE FOREGOING INSTRUMENT IS THE CORPORATE  
SEAL OF SAID CORPORATION AND THAT IT WAS AFFIXED TO SAID INSTRUMENT  
BY DUE AND REGULAR CORPORATE AUTHORITY, AND THAT SAID INSTRUMENT  
IS THE FREE ACT AND DEED OF SAID CORPORATION.

WITNESS MY HAND AND OFFICIAL SEAL THIS 14th DAY OF June 2001.

MY COMMISSION EXPIRES: 6/11/04  
Linda H. Wilcox  
NOTARY PUBLIC

#### ACCEPTANCE OF RESERVATIONS:

STATE OF FLORIDA  
COUNTY OF PALM BEACH

THE TERRA LAGO HOMEOWNERS ASSOCIATION, INC. HEREBY  
ACCEPTS THE DEDICATIONS OR RESERVATIONS TO SAID ASSOCIATION AS  
STATED AND SHOWN HEREON, AND HEREBY ACCEPTS ITS MAINTENANCE  
OBLIGATIONS FOR SAME AS STATED HEREON, DATED THIS 11th DAY OF  
June 2001.

WITNESS: Linda H. Wilcox  
TERRA LAGO HOMEOWNERS  
ASSOCIATION, INC. A FLORIDA  
CORPORATION NOT FOR PROFIT

#### ACKNOWLEDGMENT:

STATE OF FLORIDA  
COUNTY OF PALM BEACH

BEFORE ME PERSONALLY APPEARED Harold Krawitz, WHO IS  
PERSONALLY KNOWN TO ME, OR HAS PRODUCED  
IDENTIFICATION, AND WHO EXECUTED THE FOREGOING INSTRUMENT AS  
PRESIDENT OF TERRA LAGO HOMEOWNERS ASSOCIATION, INC., A FLORIDA  
CORPORATION NOT FOR PROFIT, AND ACKNOWLEDGED TO AND BEFORE ME  
THAT HE EXECUTED SUCH INSTRUMENT AS SUCH OFFICER OF SAID CORPORATION, AND  
THAT THE SEAL AFFIXED TO THE FOREGOING INSTRUMENT IS THE CORPORATE  
SEAL OF SAID CORPORATION AND THAT IT WAS AFFIXED TO SAID INSTRUMENT  
BY DUE AND REGULAR CORPORATE AUTHORITY, AND THAT SAID INSTRUMENT  
IS THE FREE ACT AND DEED OF SAID CORPORATION.

WITNESS MY HAND AND OFFICIAL SEAL THIS 14th DAY OF June 2001.

MY COMMISSION EXPIRES: 6/11/04  
Linda H. Wilcox  
NOTARY PUBLIC

#### TITLE CERTIFICATION

STATE OF FLORIDA  
COUNTY OF PALM BEACH

I, MICHAEL R. FLAM, A DULY LICENSED ATTORNEY IN THE STATE OF FLORIDA, DO HEREBY  
CERTIFY THAT I HAVE EXAMINED THE TITLE TO THE HEREON DESCRIBED PROPERTY;  
THAT I FIND THE TITLE TO THE PROPERTY IS VESTED IN  
IBIS WEST PALM PARTNERS L.P., A DELAWARE LIMITED PARTNERSHIP;  
THAT THE CURRENT TAXES HAVE BEEN PAID; THAT ALL MORTGAGES NOT SATISFIED OR RELEASED  
OF RECORD NOR OTHERWISE TERMINATED BY LAW ARE SHOWN HEREON; AND  
THAT THERE ARE ENCUMBRANCES OF RECORD BUT THOSE ENCUMBRANCES  
DO NOT PROHIBIT THE CREATION OF THE SUBDIVISION DEPICTED BY THIS  
PLAT.

BROAD AND CASSEL  
CITY OF WEST PALM BEACH  
SURVEYOR

DATE: 5-29-01

BY: Michael R. Flam  
MICHAEL R. FLAM  
ATTORNEY AT LAW  
LICENSED IN FLORIDA

#### SURVEYOR'S CERTIFICATE

STATE OF FLORIDA  
COUNTY OF PALM BEACH

I HEREBY CERTIFY THAT THE PLAT SHOWN HEREON IS A TRUE AND CORRECT  
REPRESENTATION OF A SURVEY MADE UNDER MY RESPONSIBLE DIRECTION  
AND SUPERVISION AND THAT SAID SURVEY IS ACCURATE TO THE BEST OF  
MY KNOWLEDGE AND BELIEF THAT PERMANENT REFERENCE MONUMENTS  
(P.R.M.'S) HAVE BEEN PLACED AS REQUIRED BY LAW AND PERMANENT  
CONTROL POINTS (C.P.'S) AND MONUMENTS WILL BE SET UNDER THE GUARANTEES POSTED  
WITH THE CITY OF WEST PALM BEACH, FLORIDA FOR THE REQUIRED  
IMPROVEMENTS; AND FURTHER THAT THE SURVEY DATA COMPLIES WITH ALL  
THE REQUIREMENTS OF CHAPTER 177, FLORIDA STATUTES, AS AMENDED, AND  
ORDINANCES OF THE CITY OF WEST PALM BEACH, FLORIDA.

DATE: 5/29/01

BY: David P. Lindley  
DAVID P. LINDLEY P.L.S.  
REG. LAND SURVEYOR #5005  
STATE OF FLORIDA  
LB #3591

